



Prairie State College

ATA
GLANCE

Welcome to Prairie State College!

For more than 50 years, Prairie State College (PSC) has provided quality education and programs to more than 230,000 members of our community, successfully fulfilling its mission: To be a richly diverse community college dedicated to student-centered instruction that fosters success in adult, transfer, and workforce education.

The college's core values of teaching and learning, community, diversity, excellence, and caring and concern strengthen our mission.

PSC's mission and core values are reflected in our strategic plan. With our strategic plan, we will continue to strengthen PSC as an institution of quality teaching and learning, as well as focusing on the needs of the community and enhancing the success of our students.

Did you know?

Our student-to-faculty ratio of 17:1 leads to an environment of student success.



Our District

- Includes the communities of Beecher, Chicago Heights, Crete, Flossmoor, Ford Heights, Glenwood, Homewood, Matteson, Monee, Olympia Fields, Park Forest, Richton Park, Sauk Village, South Chicago Heights, Steger and University Park, plus portions of Country Club Hills, Hazel Crest, Lynwood, Tinley Park, and adjacent unincorporated areas of Cook and Will counties.
- Current estimated population: 220,000

Our Offerings

- Transfer Programs
- Career Programs
- Adult Education
- Workforce Development

Our Staff

- Prairie State College is one of the largest employers in the area with more than 615 employees.
- More than 90 percent of our faculty hold a master's or doctoral degree.
- Our student-to-faculty ratio of 17:1 leads to an environment of student success.

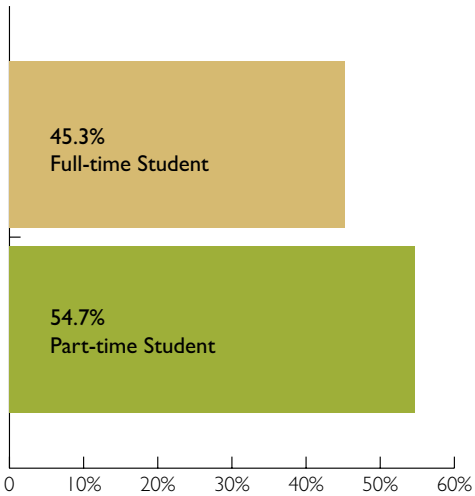
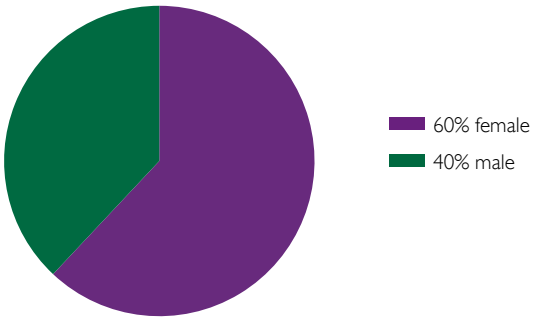
Our Student Body

- 12,226 students enrolled in credit and non-credit courses
- 128,966 credit hours of courses taken by our students
- Average age of credit student: 28
- Average age of non-credit student: 46





Our Students



Did you know?

The average age of a credit student is 28 and the average age of a non-credit student: 46.



Academic Excellence

Degrees and Certificates

Whether the goal is to obtain a bachelor's degree or earn a degree or certificate to begin a career immediately, PSC has something for everyone. PSC offers associate's degrees to prepare students for transfer to four-year colleges and universities. PSC guarantees that its credits will transfer to other public colleges and universities through the Illinois Articulation Initiative (IAI), a statewide transfer agreement. Through the IAI, PSC graduates with an associate in arts, associate in science, and associate in arts in teaching benefit from an agreement with over 100 colleges, universities, and community colleges that the associate's degree earned at PSC will transfer.

PSC's career programs provide real world training that expands beyond the classroom. Students can get the training to begin a career immediately in two years or less.

AT A GLANCE

Excellent Faculty

Students aren't just another number at PSC. Our classes are taught by faculty who care about teaching and student learning and not by teaching assistants. The average student to teacher ratio is 17:1. In fact, PSC's faculty, staff, and administrators are on a first name basis with many of our students.

Did you know?

More than 90 percent of our faculty hold a master's or doctoral degree.

Flexible Scheduling

Our classes are available when students are—
days, evenings, weekends, and online.



Tools for Success

At PSC, we provide students with the tools for classroom success. In addition to quality teaching, we offer student services such as free tutoring, open computer labs, a full-service library, modern technology in the classroom, and more.

A Great Value

Students get a quality education at an affordable price at PSC. We offer associate degrees that transfer and career programs.

By starting at PSC first and completing an associate's degree and then transferring to a four-year university in Illinois, students can save more than \$11,000 in tuition and fees toward a bachelor's degree.

Honors Program

Students who want to enhance their college experience can take classes in the Honors program. Honors classes offer a unique learning experience, stressing depth of coverage, discussions, and creative assignments. Honors courses meet the college's general education requirements.

Start with Us

PSC's associate degrees meet the guidelines of the IAI "Transferable General Education Core Curriculum" and the Illinois Community College Board "Guidelines for Associate Degrees Designed for Transfers." PSC's General Education Core is designed to ensure that all students develop the following skills and knowledge:

- Communication
- Critical thinking
- Knowledge
- Social and cultural awareness
- Literacy

Career Options

PSC offers a number of degree and certificate programs to begin a career immediately in areas such as automotive, business, early childhood education, health professions, industrial technology, information technology, music, photography, and more. In the health professions, PSC is the number one provider of first responders. Options include:

- Paramedicine
- Emergency Medical Technician
- Dental Hygiene
- Nursing
- Surgical Assistant
- Fire Science



Athletics and Student Life

PSC has an active campus life with more than 10 sports and more than a dozen clubs including Art Club, Forensics Team, All Latin Alliance, Black Student Union, *PSC Student Review* Newspaper, and more.

Financial Aid and Scholarships

In addition to state and federal grants, the Prairie State College Foundation provides a variety of scholarship opportunities. Financial aid is available to assist students and their families in meeting the costs of a college education. Those who need help paying for fees, books, and other expenses should apply for financial aid. More than 50 percent of our students receive financial aid.

Prairie State College Foundation

The PSC Foundation is a non-profit organization committed to excellence in education by promoting PSC and enhancing the opportunities for students. The Foundation works to:

- Increase public awareness of the College's central role in the well-being of our community and its citizens.
- Seek financial support to fund student scholarships, attract and retain able faculty and staff, and provide for the College's growth and development.

For more information about the Foundation, call (708) 709-3636.





A Cultural Hub

Art Gallery

The Christopher Art Gallery presents up to eight shows annually, featuring local and regional artists as well as student work. Exhibits vary by media and theme. Annual exhibitions include a regional juried exhibition, the Photographer-of-the-Year show, and a juried exhibit showcasing art by high school students in PSC's district. Exhibits are free and open to the public. Call (708) 709-3636 for information on what's currently on exhibit.

Jazz Fest

PSC's annual Jazz Fest is the south suburbs premier jazz concert featuring some of the nation's top jazz artists. The PSC Jazz Festival also brings together local junior high and high school jazz musicians for two days of instrumental clinics

AT A GLANCE

Musical Events

The college's own music ensembles hold a number of concerts a year. Groups include the PSC Jazz Band, the PSC Wind Ensemble, the PSC Vocal Jazz Ensemble, and the PSC Extreme Big Band.





Community and

Continuing and Professional Education

PSC offers numerous non-credit opportunities at the Matteson Area Center. Students can enroll in a wide variety of courses from computers to yoga, as well as take courses for vocational certificates such as pharmacy technician and medical billing/coding specialist.

Workforce Development

The College offers several services within the Division of Community and Economic Development to prepare and train employees and support the businesses of Chicago's south suburbs. Services include Corporate Education and Training which provides customized training programs for businesses.



AT A
GLANCE

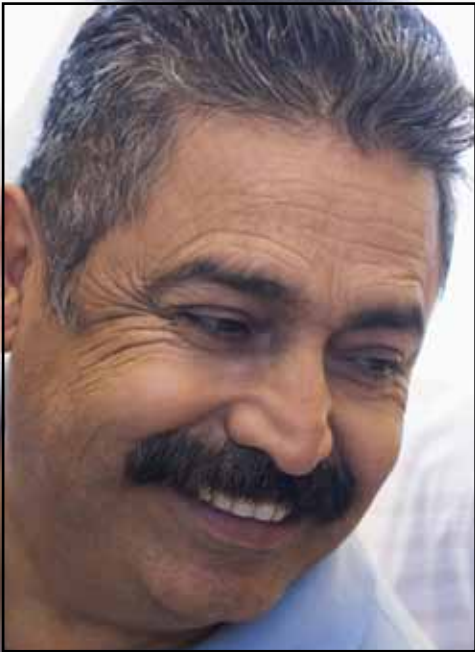
Economic Development

**Business and Community Education
Conference Center**

The Business and Community Education Center is an excellent choice to hold a meeting or conference. The college offers meeting room rentals with the latest multi-media presentation equipment, a 486-seat auditorium, and smaller meeting rooms. Full-service catering also is available.

Illinois workNet Center

The Illinois workNet Center offers a one-stop shop for job seekers and employers with employment training, job search assistance, and services for employers to help meet human resource needs.



Adult Education

The Adult Education Program serves a diverse population of adult learners both on campus and in the community. Classes provide learning opportunities to non-high school graduates, 16 and older.

PSC's mission is to teach basic skills needed to function efficiently as a family member, citizen, worker, and lifelong learner in a changing world. Adult education classes are available during the day and evening. Classes are held in the Adult Training and Outreach Center, one of only a few buildings in the country dedicated to adult education.

Based on assessment of their needs and skill level, students are placed in the proper adult education program which includes Adult Literacy Institute, Adult Basic Education, English as a Second Language, and General Education Development in English and Spanish.

Did you know?

In 2010, 12,226 students enrolled in credit and non-credit courses.



Disability Services

PSC is committed to providing reasonable accommodations for enrolled or admitted students with documented disabilities, under Section 504 of the Rehabilitation Act of 1973 and Americans with Disabilities Act of 1990 (ADA). Students with disabilities who need accommodations should call (708) 709-3603. Early arrangements will enable PSC to provide comfortable and supportive classrooms from the first day of class.

Student Success Center

The Student Success Center (SSC) provides academic support to all students intent on improving their success. The SSC staff is made up of both professional and peer tutors. Tutoring is free. An open computer lab also is available. For more information, call (708) 709-3663.



Specialized Services

AT A GLANCE

Childcare

The Children's Learning Center is a licensed facility offering both quality full- and part-time childcare for children ages 24 months to 12 years old. The center accepts subsidized payments from outside agencies such as Action for Children and Child Care Initiatives. Advance registration is required. For more information, call (708) 709-3725.

Bilingual Advising

PSC provides an opportunity for Spanish speaking families to be involved in the college enrollment process. Bilingual advising is available to assist students in deciding which programs and courses fit their needs and answering questions about PSC. For more information, call (708) 709-3567.

English as a Second Language (ESL)

The ESL program is open to in-district residents, ages 16 and older, whose native language is not English. Classes teach speaking, listening, reading, and writing skills in a friendly, communicative environment dedicated to helping students achieve their personal, academic, and professional goals. For more information, call (708) 709-7922.

TRiO

The TRiO Student Support Services (SSS) program provides education services to low-income, disabled, and/or first generation college students. Services include mentoring, networking, and facilitating the transfer process to four-year colleges and universities.

Non-Traditional Pathways Project

PSC is committed to providing information regarding non-traditional careers and employment possibilities available for women. Workshops and other activities are conducted informing district residents of the varied career opportunities. For more information, call (708) 709-3689.

Veterans

Veterans receive one-on-one advising from the beginning and support throughout the entire admissions process. Every semester, veterans are eligible for early registration and always receive in-district tuition rates, regardless of where they live. PSC accepts several programs that cover tuition and fees. The college assists veterans in making the most of these benefits. For more information, call (708) 709-3562.





African American Male Initiative

PSC is dedicated to supporting the needs of African American male students. Through personal advising, computer-assisted tutoring, seminars, workshops, and networking opportunities, students are afforded every resource to attain their educational goals. There are several opportunities available including the use of the Learning Achievement Center (LAC) and the Protégé Program.

The Learning Achievement Center (LAC) is designed to support the academic success of PSC's African American male students. The LAC includes an 18-seat computer lab and quiet study area, and is where students access additional resources such as textbook, laptop, and calculator loans. For more information, call (708) 709-7917.

Protégé Program

The Protégé Program aims to identify and eliminate the barriers to success often encountered by minority males in college through personalized academic advisement, on- and off-campus seminars, workshops and conferences, college trips, and resource offerings. For more information, call (708) 709-3912.

New Directions for Returning Adults

PSC understands that starting or returning to college as an adult can be overwhelming. The college has several services available to assist returning adults including the New Directions for Returning Adults Information Session. For more information, call (708) 709-3603.

Prairie State College History

Like many community colleges in Illinois, Prairie State College (PSC) was initially created by a local high school district. The first freshmen enrolled in Bloom Township Junior College in the fall of 1958 and met in classes held in a local church. In the fall of 1959, the College opened its first building, the College Center.

In 1967 the College was reorganized as a Class I Junior College and was renamed Prairie State College the following year. The College's original campus consisted of ten temporary buildings on the northwest corner of Halsted Street and Vollmer Road.

Construction of the main campus began in the fall of 1972 and was completed in the fall of 1975. A vocational-technical addition to the main campus was dedicated in August 1979. A Library, the Christopher Art Gallery, and the Community Instructional Center (later renamed the Business and Community Education Center) opened in 1996.

In 1999, the Matteson Area Center opened as a convenient off-campus location to accommodate district residents. The Health/Tech Center, home to the Dental Hygiene, Surgical Technology, and Networking programs, opened in 2000. The Fitness Complex, a unique partnership among Prairie State College, the Chicago Heights Park District, and St. James Hospital and Health Centers, opened in 2001. Ground was broken in May 2002 for the Adult Training and Outreach Center and Children's Learning Center.





Start near. Go far.

Contact Us

Want to learn more about Prairie State College?
Visit us on our Web site at prairiestate.edu/start.
Or, call the college at (708) 709-3500.

 **Prairie State College**

202 South Halsted Street | Chicago Heights, IL 60411

prairiestate.edu