

## Days and hours of operation

- Monday through Thursday, 7 a.m. to 10:15 p.m.
- Friday, 7 a.m. to 5 p.m.
- Closed on Fridays during the summer; closed when classes are not in session.

## Fees

Our fees are reasonable. We accept subsidized payments from outside agencies such as Action for Children and Child Care Initiatives. For information on full-day rates or financial assistance, call (708) 709-3725 or visit [www.prairiestate.edu/ss/ss-clc.html](http://www.prairiestate.edu/ss/ss-clc.html)



"When I saw the new facility, I knew it was on the cutting edge. I have very good feelings about the center and its caring staff. And Anne loves it!"

- **Beth Sand, of Homewood, who recently graduated from PSC with an A.A. degree.**

## Formore information

Contact the Children's Learning Center at (708) 709-3725 or visit [www.prairiestate.edu/ss/ss-clc.html](http://www.prairiestate.edu/ss/ss-clc.html)

For more information about Prairie State College:  
Information (708) 709-3500  
Admissions (708) 709-3516  
Advising Center (708) 709-3506

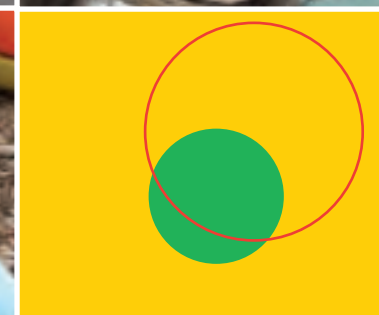
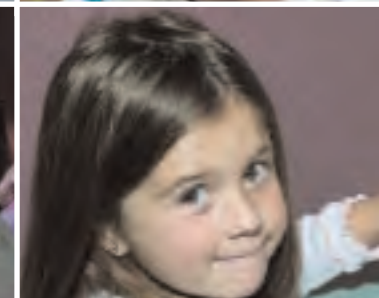
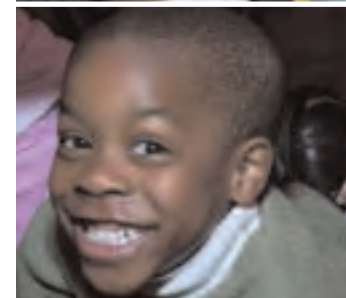


## Prairie State College

A comprehensive community college  
202 South Halsted Street  
Chicago Heights, IL 60411-8226  
(708) 709-3500 • [www.prairiestate.edu](http://www.prairiestate.edu)

# Children's Learning Center

a place to learn  
by playing and doing



 Prairie State College

# Children's

# Learning

# Center

## Our facility

Prairie State College's Children's Learning Center is a licensed facility that provides quality childcare for children ages 15 months to 12 years old. Full-time and regularly scheduled part-time care is offered to accommodate the scheduling needs of students, faculty, staff, and the community. Providing the best in care and education for children, the center also offers ongoing preschool screenings, parent workshops, and a toy-lending library. Advance registration is required.

In 2004, the center moved into a 11,426-square-foot state-of-the-art facility at the northwest corner of PSC's main campus. The building has four children's classrooms, a college classroom, a multipurpose room, a secured outdoor playground, a kitchen, and laundry facilities.



## Philosophy

All aspects of children's growth—physical, emotional, social, and intellectual—are considered in overall growth. We believe children learn through play and by doing. Therefore, we provide the activities, opportunities and an environment that help facilitate this process using the High/Scope curriculum (to find out more about this curriculum, visit [www.highscope.org](http://www.highscope.org)).

## Pre-Kindergarten program



With space for up to 40 students, the pre-kindergarten program is free to those who qualify and open to students with children as well as to others in the community. Two sessions are available: a morning session from 9 to 11:30 a.m. and an afternoon program from 12:30 to 3 p.m. Wraparound childcare services are also available on a limited basis, primarily for the morning session.

The pre-kindergarten program is funded by a grant from the Illinois State Board of Education's Childcare Block Grant, which allowed the center to begin offering pre-kindergarten in August 2003.

## Staff

The center staff members are educationally trained in child development and have many years of experience working with children. In addition to our regular staff, the center also participates in the Foster Grandparent program and has served as an internship site for Early Childhood Education students from the College.

Most of our lead teachers have bachelor's degrees in the field of early childhood education. We also serve as a site for students of the Erikson Institute who are completing their internships.

## Nutrition

Our center provides breakfast, lunch, dinner, and snacks to all children enrolled during the times those meals are served.

The Children's Learning Center participates in the Child and Adult Care Food Program, which makes nutritionally balanced meals available to all children enrolled.

## Registration

Parents interested in enrolling their children should contact the Center at (708) 709-3725. We require advance registration and the completion of all enrollment forms, including a current physical and up-to-date immunizations. In addition, a lead screening is mandatory for children under the age of six. A registration fee of \$10 per child (up to \$25 per family) is charged each semester.

Once enrolled, registration continues to be on a per-semester basis. A new contract must be signed and turned in prior to each semester. Priority is initially given to children enrolled the previous semester.

