

General Notes:

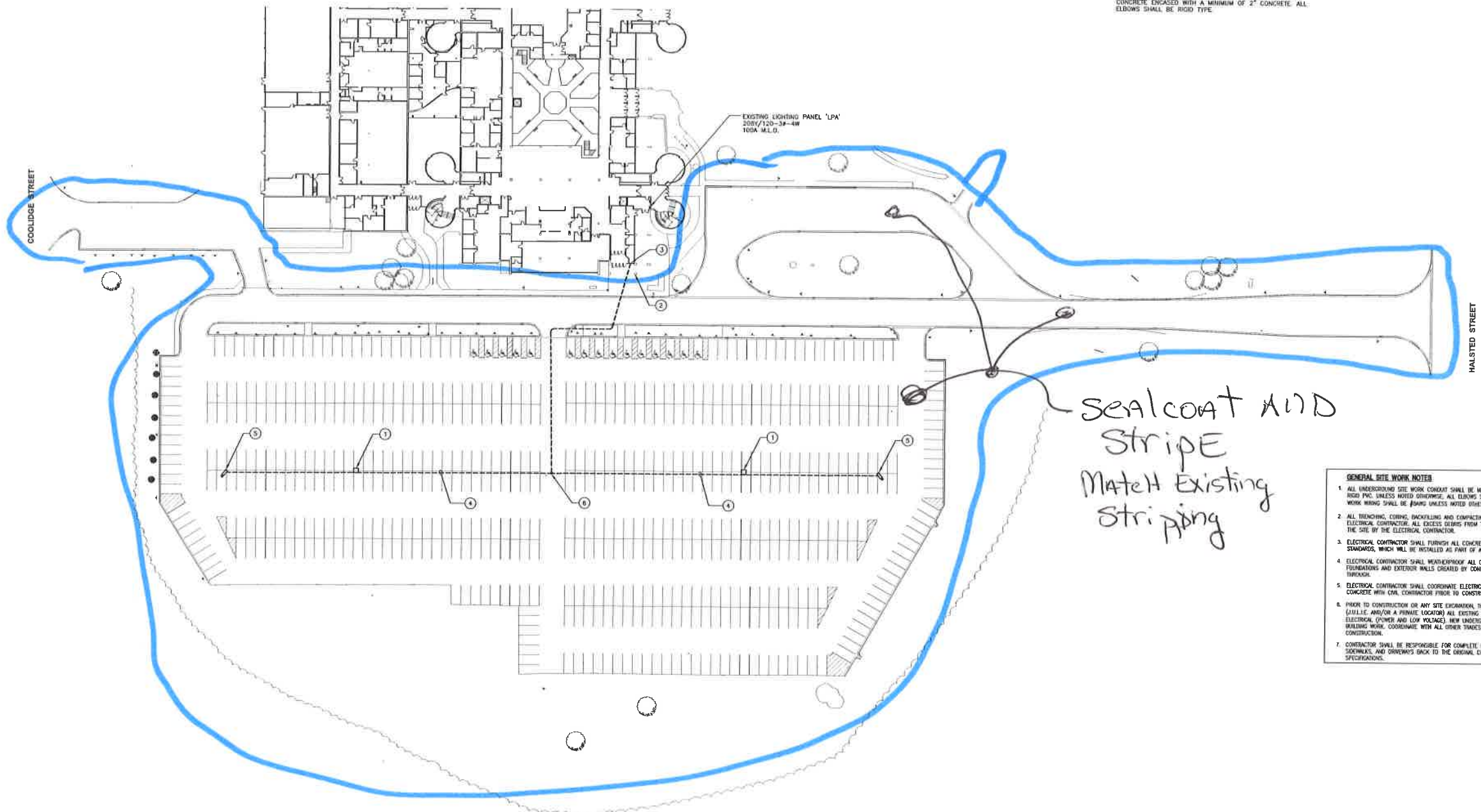
1. Street sweep all parking Lots (A, B, C, D, E AND TWL)
2. Sealcoat parking Lot A, Street, TWL AND stripe accordingly.

GENERAL NOTES

1. ALL WORK SHOWN SHALL BE NEW UNLESS NOTED OTHERWISE. CIRCUIT NUMBERS SHOWN ARE FOR REPRESENTATION ONLY. VERIFY ACTUAL CIRCUIT NUMBERS AND PHASING IN FIELD.
2. THE ELECTRICAL CONTRACTOR SHALL CONTACT J.U.L.I.E. (CALL 811) AND CONTRACT A PRIVATE LOCATOR AS REQUIRED TO IDENTIFY ALL EXISTING UNDERGROUND UTILITIES IN ALL AREAS OF WORK PRIOR TO EXCAVATION/DIGGING.
3. THE CONTRACTOR SHALL COORDINATE LOCATIONS OF ALL EXISTING, NEW AND PROPOSED UNDERGROUND UTILITIES IN THE AREAS OF TRENCHING AND DIGGING FOR ELECTRICAL LINES AND HANDHOLES PRIOR TO CONSTRUCTION.
4. THE CONTRACTOR SHALL COORDINATE SHUT DOWN OF ANY EQUIPMENT / SWITCHES WITH PRAIRIE STATE COLLEGE FACILITIES DEPARTMENT ONE WEEK PRIOR TO THAT SHUT DOWN.
5. THE CONTRACTOR SHALL COORDINATE INSTALLATION LOCATIONS OF LIGHT POLES, QUADRITE BOXES, AND ROUTING OF CONDUIT WITH EXISTING OBSTRUCTIONS, INCLUDING LARGE TREES AND EXISTING UNDERGROUND UTILITIES. CONSULT ENGINEER AND/OR ARCHITECT PRIOR TO ADJUSTING LOCATIONS OF LIGHT POLES.
6. ALL UNDERGROUND SITE WORK CONDUIT SHALL BE MINIMUM 3/4" BELOW FINISH GRADE AND SCHEDULE 80 RIGID PVC UNLESS NOTED OTHERWISE. ALL CONDUITS UNDER PAVED AREAS SHALL BE CONCRETE ENCASED WITH A MINIMUM OF 2" CONCRETE. ALL ELBOWS SHALL BE RIGID TYPE.

KEY NOTES

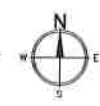
1. INSTALL NEW CALL 24 EMERGENCY CALL BOX, SOLAR PANEL AND BLUE LIGHT MOUNTED TO NEW POLE. VERIFY LOCATION AND REQUIREMENTS IN FIELD.
2. SHOWN FOR REFERENCE ONLY - EXISTING CALL 24 EMERGENCY CALL BOX AND BLUE LIGHT TO REMAIN.
3. ROUTE NEW CONDUIT INTO BUILDING JUNCTION BOX. PROVIDE "LIFT" FITTING AT EXTERIOR AND ROUTE THROUGH WALL INTO BUILDING JUNCTION BOX ABOVE FOUNDATION. WEATHERSEAL WALL PENETRATION. VERIFY ROUTING, LOCATION AND REQUIREMENTS IN FIELD.
4. ROUTE NEW 2" SCHEDULE 80 PVC CONDUIT. TRENCH AND BORE AS REQUIRED. TURN UP TO DEVICES USING RIGID CONDUIT.
5. LOCATION OF OWNER SUPPLIED CAMERA. PROVIDE CONDUIT AND BACKBOX ON LIGHT POLE FOR FUTURE CAMERA.
6. APPROXIMATE LOCATION FOR NEW QUADRITE BOX. 18"x12"x12"D. COVER TO READ "COMM". REFER TO DETAIL. VERIFY LOCATION AND REQUIREMENTS IN FIELD.



- GENERAL SITE WORK NOTES**
1. ALL UNDERGROUND SITE WORK CONDUIT SHALL BE MINIMUM 3/4" BELOW FINISH GRADE AND SCHEDULE 80 RIGID PVC UNLESS NOTED OTHERWISE. ALL ELBOWS SHALL BE RIGID TYPE. MINIMUM WIRE FOR ALL SITE WORK WIRING SHALL BE #14 UNLESS NOTED OTHERWISE.
 2. ALL TRENCHING, CURING, BACKFILLING AND COMPACTING FOR THE ELECTRICAL INSTALLATION IS BY THE ELECTRICAL CONTRACTOR. ALL EDGES, DEBRIS FROM TRENCHING AND CURING SHALL BE REMOVED FROM THE SITE BY THE ELECTRICAL CONTRACTOR.
 3. ELECTRICAL CONTRACTOR SHALL FURNISH ALL CONCRETE BASES COMPLETE, EXCEPT FOR LIGHT POLE STANDARDS, WHICH WILL BE INSTALLED AS PART OF A SEPARATE CONTRACT.
 4. ELECTRICAL CONTRACTOR SHALL WEATHERPROOF ALL OPENINGS AND PENETRATIONS THROUGH FOUNDATIONS AND EXTERIOR WALLS CREATED BY CONDUITS TO PREVENT MOISTURE FROM ENTERING THROUGH.
 5. ELECTRICAL CONTRACTOR SHALL COORDINATE ELECTRICAL COMMENTS TO BE INSTALLED IN LIGHT POLE CONCRETE WITH CIVIL CONTRACTOR PRIOR TO CONSTRUCTION. REFER TO CIVIL PLANS FOR DETAIL.
 6. PRIOR TO CONSTRUCTION OR ANY SITE EXCAVATION, THE CONTRACTOR SHALL COORDINATE AND LOCATE (UTILITIES AND/OR A PRIVATE LOCATOR) ALL EXISTING UNDERGROUND UTILITIES WITH RESPECT TO ELECTRICAL (POWER AND LOW VOLTAGE). NEW UNDERGROUND ELECTRICAL SHALL BE INSTALLED PRIOR TO BUILDING WORK. COORDINATE WITH ALL OTHER TRADES PERFORMING UNDERGROUND WORK PRIOR TO CONSTRUCTION.
 7. CONTRACTOR SHALL BE RESPONSIBLE FOR COMPLETE RESTORATION OF ALL DISTURBED LANDSCAPING, SIDEWALKS, AND DRIVEWAYS BACK TO THE ORIGINAL CONDITION. REFER TO ARCHITECT'S SITE RESTORATION SPECIFICATIONS.

ELECTRICAL SITE PLAN

SCALE : 1" = 40'-0"



Planera Architects
1825 North Avenue
Homewood, IL 60438
708.411.3000
fax 708.747.3000

Date Signed
License Expires

ASPHALT PAVING IMPROVEMENTS, LIGHTING AND RELATED WORK
PRAIRIE STATE COLLEGE
CHICAGO HEIGHTS, IL
ELECTRICAL SITE PLAN - POWER AND SYSTEMS

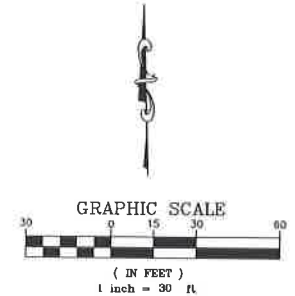
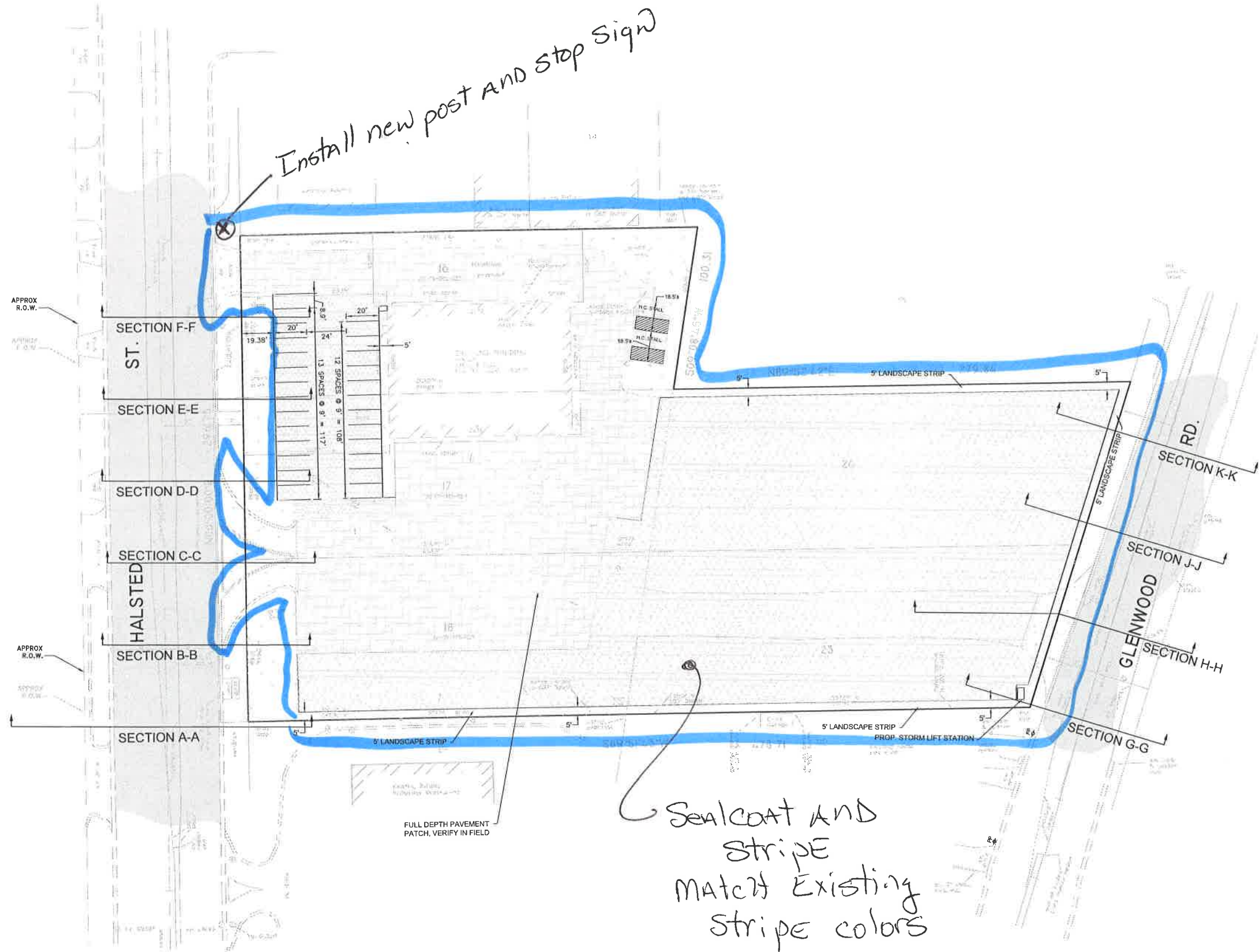
CALL J.U.L.I.E.
CALL 48 HOURS BEFORE YOU DIG
(the working days)
BEFORE YOU DIG
CALL 811 or
1-800-892-0123
Operates 24 hours 365 days a year

Revisions:
Drawn by:
Date:
Job No:
Sheet No:

AMSCO
ELECTRICAL
1871 BELMONT ROAD
ELECTRICAL SERVICE, INC. ILLINOIS
LICENSED
ELECTRICAL CONTRACTOR (604) 00000000
REPRODUCTION OF THIS DRAWING, BY ANY PHOTOGRAPHIC, REPRODUCTION OR OTHER MEANS, WITHOUT THE WRITTEN CONSENT OF AMSCO IS STRICTLY PROHIBITED.
© 2011 AMSCO ENGINEERING INC. ALL RIGHTS RESERVED

E 201

M:\2010\10112\DWG\10112_WORKING(MWRD)(IDOT).DWG 8/3/2015 2:44 PM



EXISTING	LEGEND	PROPOSED
	SANITARY SEWER	
	STORM SEWER	
	WATER MAIN	
	FENCE	
	GAS	
	TELEPHONE	
	ELECTRIC	
	FLARED END	
	MANHOLE WITH CONCRETE COLLAR	
	MANHOLE	
	INLET	
	CATCH BASIN	
	CLEANOUT	
	SANITARY SERVICE	
	SUMP CONNECTION	
	WATER VALVE	
	VALVE VAULT	
	HYDRANT	
	WATER SERV. W/B-BOX	
	PIPE CAP	
	UTILITY POLE	
	LIGHT POLE	
	UTILITY POLE WITH LIGHT	
	GAS VALVE	
	SIGN	
	WELL	
	STORM STRUCTURE NUMBER	
	SANITARY STRUCTURE NUMBER	
	BARRIER CURB	
	B-6.12 CURB	
	B-6.24 CURB	
	HANDICAP RAMP	
	CONCRETE DRIVEWAY / SIDEWALK	
	BITUMINOUS PAVEMENT	
	BRICK PAVERS	
	MILL 1 1/2" EX. ASPHALT SURFACE, INSTALL 1 1/2" HOT MIX ASPHALT	
	GRASS	
	AREA OF UNDERGROUND STORMWATER DETENTION	

PAVING IMPROVEMENTS AT TWL TRAINING FACILITY
 PRAIRIE STATE COLLEGE
 CHICAGO HEIGHTS, ILLINOIS

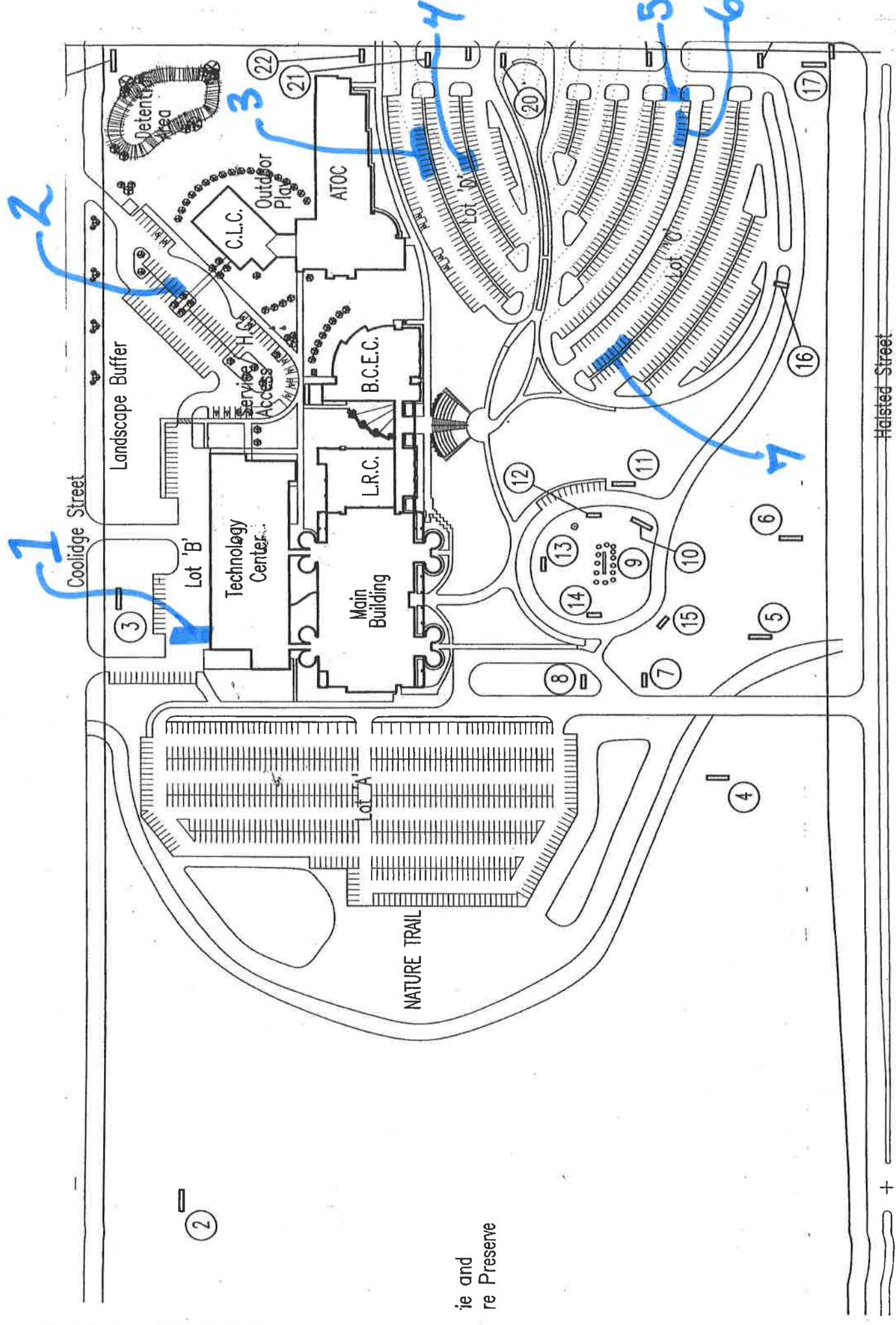
SITE PLAN

Revisions:
 7-29-16 FOR MWRD & IDOT
 Drawn by:
 Date:
 JULY 21, 2015
 Job No.
 15-515-05
 Sheet No.

M BRIDE ENGINEERING, INC.
 CIVIL ENGINEERS & SURVEYORS
 ILLINOIS PROFESSIONAL DESIGN FIRM #184-000603
 CORPORATE
 349 W. 183rd Street Suite 124
 Hazel Crest, IL 60429-3409
 708-799-1350
 ARLINGTON HEIGHTS DIVISION
 320 S. Belmont Avenue
 Arlington Heights, IL 60005-2008
 847-391-4810

3

Planera
 Architects
 18225 Morris Avenue
 Homewood, IL 60430
 708-747-3600
 fax 708-747-3650
 Date Signed
 License Expires



ie and
re Preserve

+

3,000 LF of CRACK FILL

